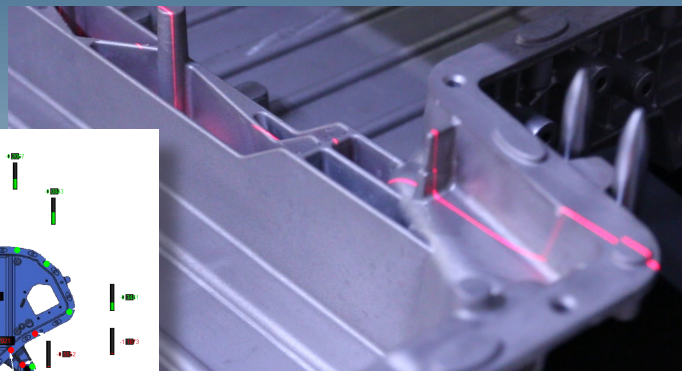
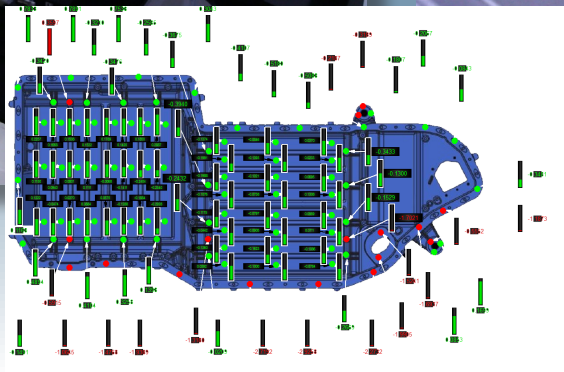
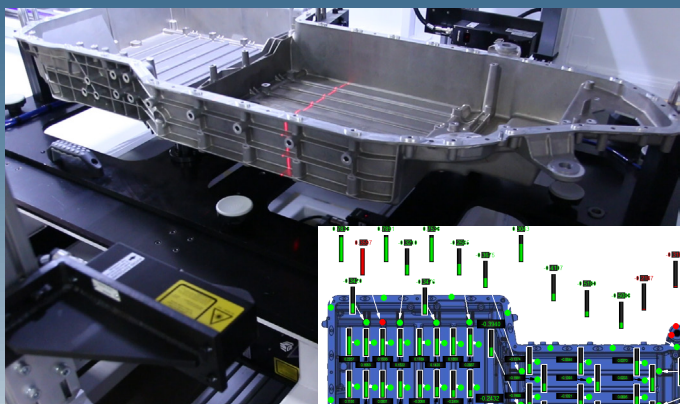


# +VANTAGE 3D

In-Line, Non-Contact Casting Metrology



**NO FAIL FORWARD**  
**100% IN-LINE INSPECTION**  
**ROBUST TOOLING CHANGE**  
**HIGH ACCURACY METROLOGY**  
**FULL SURFACE NON-CONTACT ANALYSIS**



# +VANTAGE 3D

734.432.5055

[sales@vantage-corp.com](mailto:sales@vantage-corp.com)

High tech solutions for real world problems

12651 Newburgh Rd, Livonia, MI, USA 48150  
[www.vantage-corp.com](http://www.vantage-corp.com)



## Description of the Machine

Non-contact sensors	Laser line triangulation Laser spot triangulation
Rotary table	No
Parts loading	Manual and Automatic With robot / conveyor / pallet
Autonomous work position	Yes
Dimensions (mm)*	4400x1800x2100
Weight*	1800 lbs.
GUI	Standard and configurable
Measurable references	Unlimited

## Measures and acquisitions

Data points / measurement	~3 million* data points
Data acquisition time	Part dependent
Computation time	Hidden time (25-50 seconds)*
Handling time	Part dependent

## Dimension and Geometry

Repeatability	0.030mm or better <sup>‡</sup>
Accuracy	0.030mm or better <sup>‡</sup>
Part size <sup>‡</sup> (X,Y,Z)	Part/Customer Driven



# +VANTAGE 3D

High tech solutions for real world problems

734.432.5055 sales@vantage-corp.com  
12651 Newburgh Rd, Livonia, MI, USA 48150  
[www.vantage-corp.com](http://www.vantage-corp.com)

\* Part dependent  
‡ Technology dependent, larger parts not measured at same accuracy